



## C3014/B Mobile TV Aerial Kit - 14 Element Installation and user guide

---

### Safety Instructions

- > Always follow manufacturer's operating and safety instructions when using tools and/or equipment
- > Before starting installation check structure is sound and check for hidden electrical wiring or plumbing
- > To avoid injury always route cables and wiring carefully
- > Always remove your aerial and mast before travelling
- > Handle reflector plate with care as it may have sharp edges
- > Maxview shall not be liable for any damages or injury resulting from improper installation of this aerial kit
- > If using Sikaflex-512 - Do not travel until adhesive has cured, consult adhesive manufacturer
- > If in doubt consult a qualified professional aerial installer

### Guidelines for the best reception

- > Choose the site position where the aerial can be mounted as high as possible with a clear line of sight pointing in the direction of the transmitter with no obstructions e.g trees, buildings blocking view
- > TV reception may improve with height and the less obstructions between the aerial and the transmitter the better.
- > To route the cable from the aerial to the TV inside the vehicle, the use of a Maxview weatherproof socket is recommended\*
- > For the best interference free reception, do not run in parallel with electrical or other power cables
- > The quality of picture may be improved by fitting a Maxview signal booster if you are in a weak signal area\*

\*See back page for details

### UK contact:

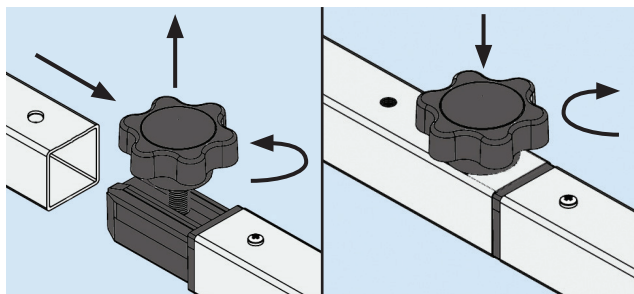
Helpline: +44 (0)1553 811000  
Email: [support@maxview.co.uk](mailto:support@maxview.co.uk)  
Web: [www.maxview.co.uk](http://www.maxview.co.uk)

### Rate and Like us on Facebook:

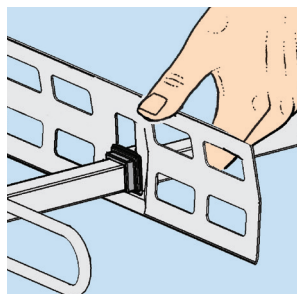


Search: 'Maxviewlimited' today.

## Assembling your Aerial

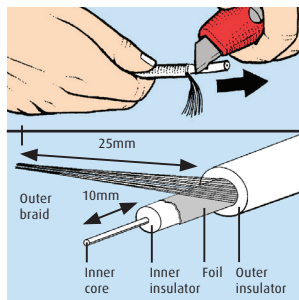


Reference the illustrations above to join the 2 parts of the aerial together. Ensure the screw is firmly tightened.

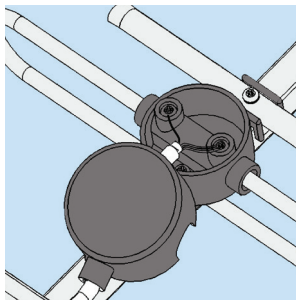


Fix Reflector Plate to Aerial by sliding it over the antenna and pushing it into the slots provided on the black plastic clip. The curve of the Reflector Plate should face forward towards the Dipole.

## Connecting Coaxial Cable

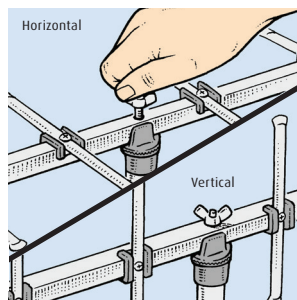


Thread coaxial cable through Dipole Cap. Strip away 25mm of outer insulator. Gather outer braid strands and twist together. Remove 10mm of inner insulation around inner core.



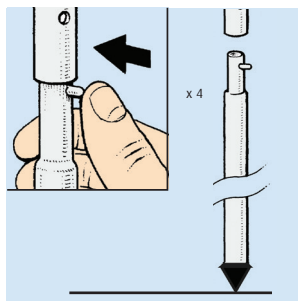
Loosen the screws on the 2 terminals in the Dipole. Feed the inner core to one of the terminals and the twisted braid into the other. Tighten screws and close Dipole Cap.

## Fixing Aerial to Mast



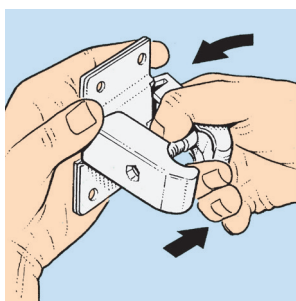
Fit Aerial to Fixing Mast in either horizontal or vertical position (look around your site to see which direction other antenna are facing).

## Assembling Mast



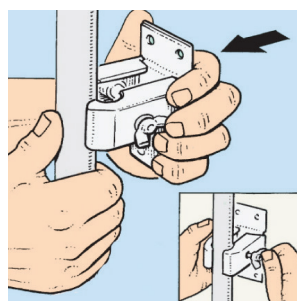
Assemble mast to the height desired. Ensure ground spike is firmly located to ground.

## Assembling Clamp



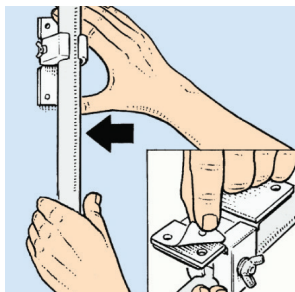
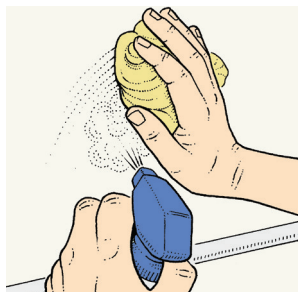
Fit the two Sprung Brackets to Fixing Plates by loosening wing nuts and expanding brackets so they clip over fixing plates.

## Attaching to Mast



Push Sprung Bracket onto Fixing Mast and tighten wing nut.

## Mounting



Please refer to the application photo on the product box for recommended position on vehicle of clamp.

### Option 1 with self adhesive pads (included)

Clean the area well before fixing and ensure surface is completely dry.

1. Peel off backing tape and apply pads to fixing plates.
2. Peel off the other side of the backing tape.
3. Place clamp assembly to your chosen location, making certain the mast is in a true vertical position and the aerial is clear of the roof.
4. Press brackets firmly to achieve good contact (to ensure permanent fixing this should be left for 24 hours).

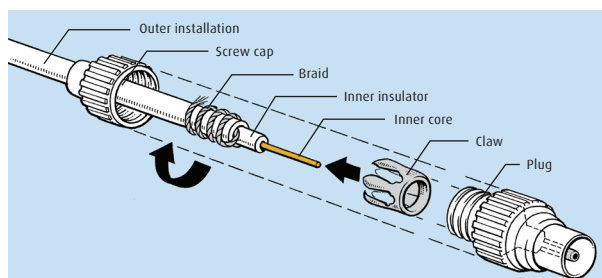
### Option 2 flexible adhesive

We recommend Sikaflex-512 Caravan. Refer to manufacturer's guidelines for installation.

### Option 3 screw mounting

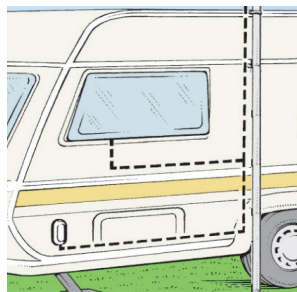
In addition to the self adhesive pads you can use self tapping screws (not supplied). Recommend screws: No 6 x ½" or 3.5mm x 12mm (4 qty).

## Coaxial Connector assembly



1. Unscrew coaxial plug and slide screw cap over cable.
2. Strip away approximately 23mm of outer insulation.
3. Gather strands of shielding braid together and wind back around the outer insulation. Remove foil shield.
4. Strip away about half of the inner insulation around inner core. Check that none of the shielding braid is touching the inner core.
5. Open claw, slide over screening braid and pinch to tighten.
6. Re-assemble connector and cut off inner core wire flush with plug.

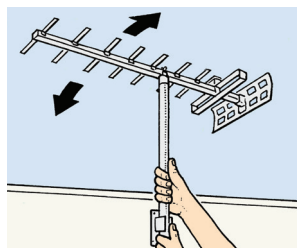
## Cable Routing



Route cable to position of entry into caravan/motorhome via either:

1. Weatherproof TV aerial socket (see reverse)
2. Through an open window

## Aerial set up



Turn on TV set. Refer to manufacturer's instructions to manually tune your TV into the available digital/HD/3D channels. Select a 'tuned in' TV channel. Next, carry out the following procedures:

1. Turn your aerial to the LEFT until you lose the picture.
2. Remember this position, then turn your aerial to the RIGHT until you lose the picture or sound again.
3. Now point your aerial to the centre of these two points and you will receive optimum reception.

Tip: If possible look at outdoor aerials in the area to see which direction to point your aerial for best reception.

Ensure aerial and mast fixings are still tight and secure. To tune in digital terrestrial TV channels refer to manufacturer's instructions for your DTT equipment.

Can't find a signal?  
Turn over>

Optional extras available from Maxview - Products to use in conjunction with your new TV Aerial Kit

## Digital TV Signal Finder

- Assists and speeds up aerial alignment for the best terrestrial TV (digital/HD/3D) reception available
- Optimise signal reception before auto tuning TV/receiver
- Features signal sensitive control for high or low signal strength areas
- For use with an directional touring and home TV aerials
- Simply connects to aerial, adaptors included
- Includes battery and velcro mounts
- 2 year guarantee

Specifications:

Frequency: 40-860MHz

Signal range: 60-90dBμ

Power requirement: 5V dc 40mA

External power supply: 5-12V

Battery type: 9V PP3

Code: MXL013



---

## Variable Signal Booster - 2 Output

- Increases the strength of all incoming terrestrial TV (digital/HD/3D) and radio (FM/DAB) signals in weaker reception areas
- 12/24V ideal for use with any touring TV or radio aerials
- Variable gain for high or low signal strength areas
- Gold plated 'F' connectors for improved connectivity
- Blue LED power indicator
- Low power consumption
- Wall mounting option available
- 2 year guarantee
- Designed in the UK

Specifications:

Frequency: 40-860MHz

Gain control: 0-18dB

Noise: <4dB

Input voltage: 12/24V DC current 50mA

Code: MXL008



Includes fused power cable

---

## Weatherproof Sockets

- Provides a permanent external weatherproof entry point/s into any touring vehicle
- For mounting on the side of a vehicle
- Complete with self adhesive foam pads and screws for easy installation
- Designed in the UK

Variants available:

Single with Coax Connector - Code: B2021

Twin with 'F' & Coax Connector - Code: B2008

All the above are available online at [www.maxview.co.uk](http://www.maxview.co.uk)  
Or alternatively visit your local leisure store.

