

Product info

Diagnose Tool

August 2018



Truma Diagnose Tool

Detect and remedy faults quickly

The Truma Diagnose Tool enables you to read out the fault memory of TIN bus-capable appliances. On the laptop you can see what measures are necessary to remedy the fault. This enables you to clearly diagnose the fault and keep track of the history. It is also possible to unlock blocked electronics if necessary.

The Truma Diagnose Tool allows you to carry out repairs quickly and precisely, and helps to keep your customers very satisfied.

Advantages

- Precise fault analysis
 - You can see whether the electronics are actually faulty and reduce your returns quota.
- Greater service competence
 - You can offer your customers faster repairs and thereby increase customer satisfaction.
- Intuitive operation
- Free, updatable software

Software Version 5.10.0 or higher

can be used

- for reading the fault memory for the following appliances:
 - Mover XT, XTL, XT2, XT4
 - Mover SE, SE R
 - Mover TE, TE R
 - Mover TE R4
 - Mover SX, SR
 - Mover S, Caravan Mover (from January 2008)
 - Manoeuvring system GO2
 - Combi 4, 6, 2E, 4E, 6E (from 2010)
 - Combi D 4, D 6, D 6E
 - Truma Combi eco (plus), comfort (plus)
 - Truma Combi 2 E, 4 E (Australia)
 - Truma VarioHeat
- for unlocking the electronics when an automatic interlock has been performed
- for the function test of the digital control panel
 - CP plus CI bus

Languages

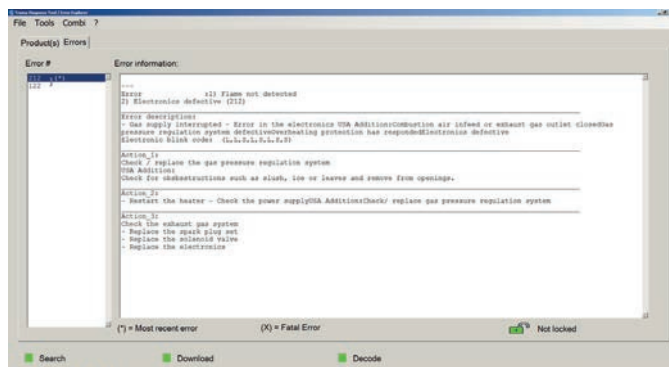
- German, English, French, Italian, Dutch, Swedish and Finnish



Operation

The Diagnose Tool program is used for reading out the fault memory of microcomputer-controlled appliances. A measures catalogue for troubleshooting is shown in the program window. The fault memory contents can be saved, sent and deleted, and the appliance interlock can possibly be released.

Software updates are provided as free downloads to all users in the Truma dealer login.



In the Live Display, it is also possible to read and in some cases control the current operating states of the Combi / Truma VarioHeat heaters.



System requirements

Windows 7, 8 and 10








The Diagnose Tool software uses Microsoft.NET Framework Version 4.0.

If this framework is not preinstalled, it is installed automatically.

Installation

1. Uninstall the old Diagnose Tool software.
2. Install the new Diagnose Tool software on the computer by downloading* (or off the CD).
3. Connect the Truma Diagnose Tool between the computer and appliance by using an appliance-specific cable.
4. Start the program by double clicking.
5. The rest of the procedure is intuitive or can be found in the installation instructions*.

* at truma.com in the dealer section under Service – Truma Diagnose Tool

Product	Part-No.	Description
      	50000-38000	<p>Diagnose Tool Interface (hardware) L = 130 mm W= 65 mm H = 25 mm</p> <p>Delivery includes:</p> <p>CD with installation software for „Diagnose Tool“ and „Live Display“</p> <p>USB cable, 2 m</p> <p>Cable, 3 m (2 units) Combi connection (RJ12 – RJ12)</p> <p>Cable, 3 m Mover connection (RJ12 – direct plug)</p> <p>Coupling (RJ12 – RJ12)</p> <p>USB power supply unit (5 V -> 12V)</p>

Truma Gerätetechnik GmbH & Co. KG
Wernher-von-Braun-Straße 12
85640 Putzbrunn
Germany
Telefon +49 (0)89 4617-2020
customer@truma.com

The right to effect technical modifications is reserved!